

Seville (A)

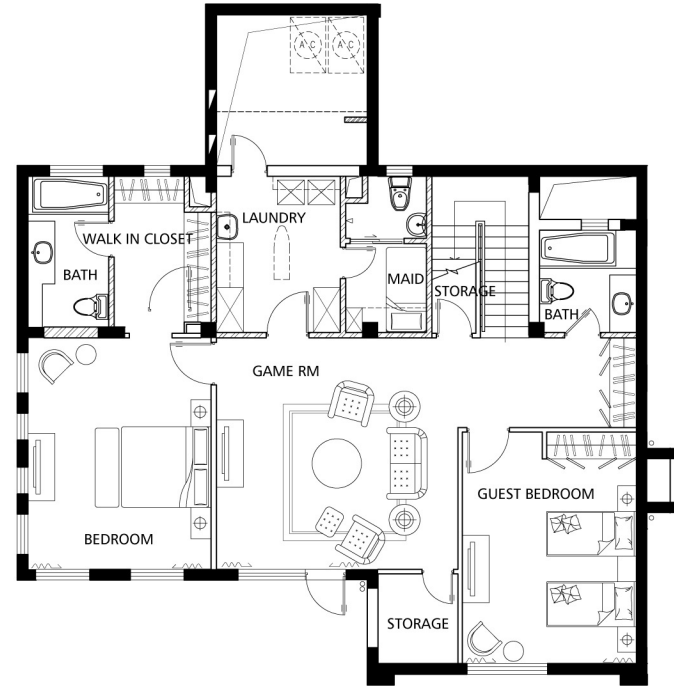
B7S

Total Area: 508 m²

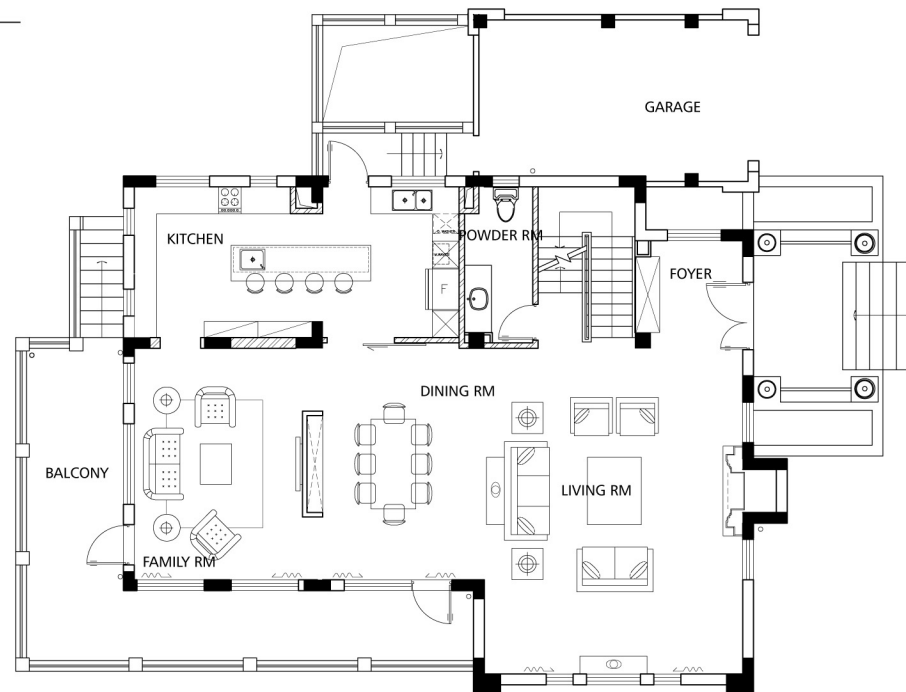


WILLOWBROOK
AT THE GREENHILLS

Ground Level: 172.76 m²



Main Level: 138.67 m²



Seville (A)

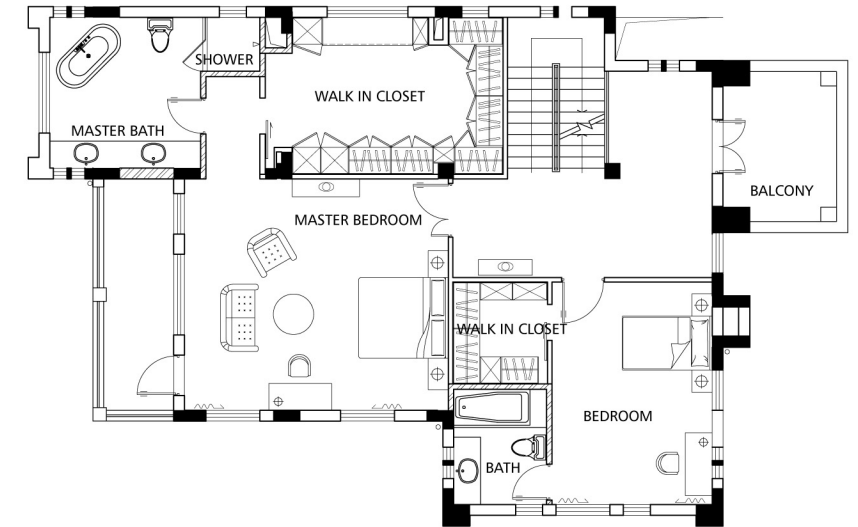
B7S

Total Area: 508 m²

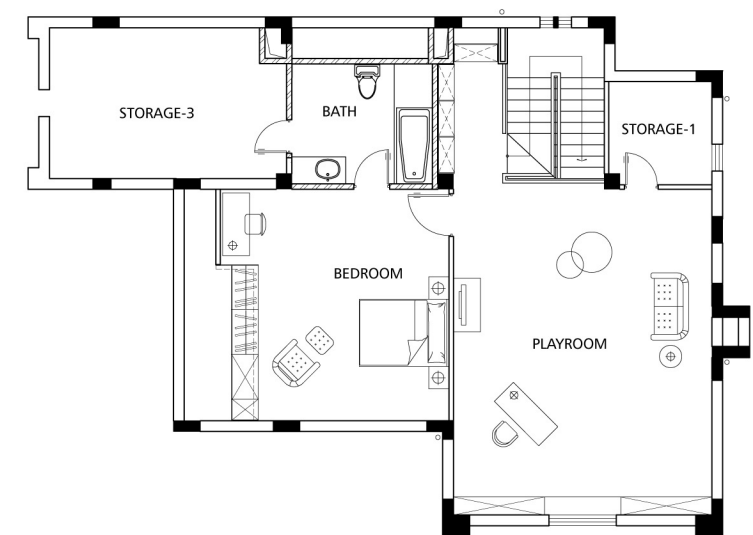


WILLOWBROOK
AT THE GREENHILLS

Second Level: 132.29 m²



Third Level: 64.58 m²



- * Disclaimer:
- 1) Total Area Size is for reference only
 - 2) Legal Construction Size for model B7S is 405.35 m²
 - 3) Third Level area calculation does not include floor area under 1.2 m in height
 - 4) Furniture is included for visual reference only