

# Tudor (B)

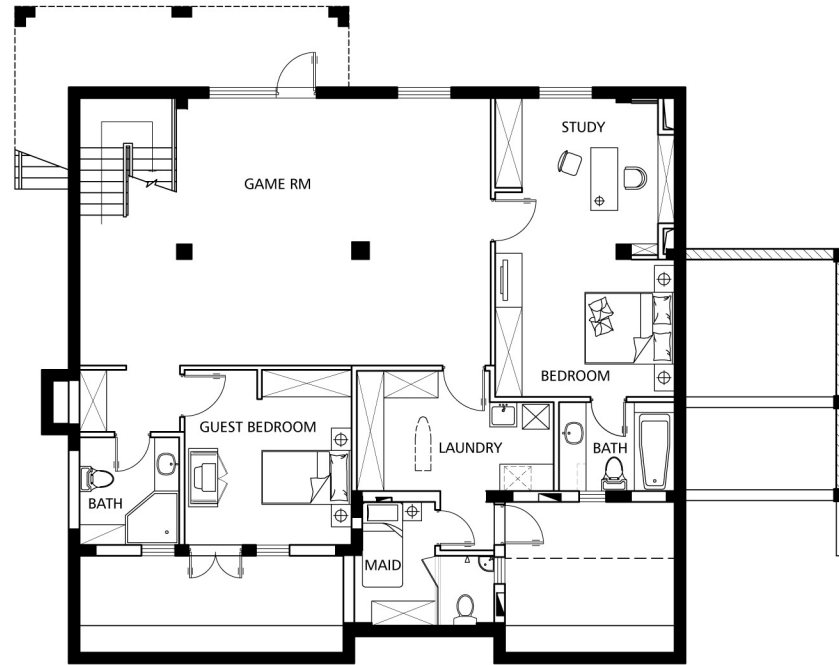
B4E

Total Area: 489 m<sup>2</sup>

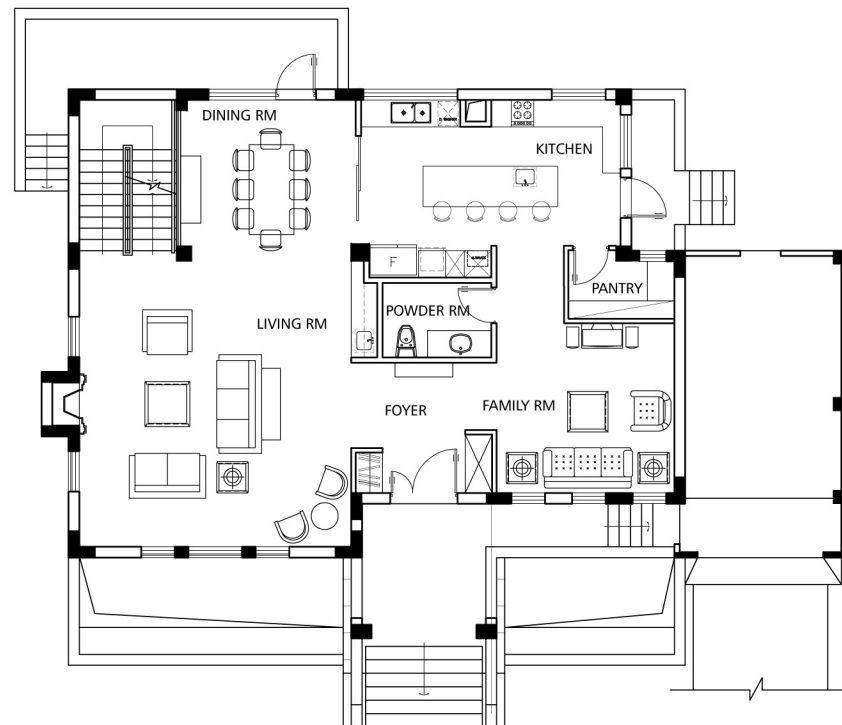


WILLOWBROOK  
AT THE GREENHILLS

Ground Level: 159.54 m<sup>2</sup>



Main Level: 130.12 m<sup>2</sup>



# Tudor (B)

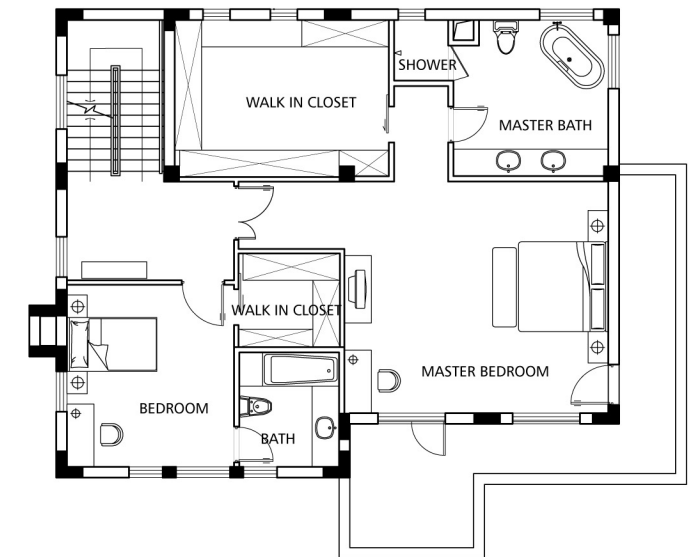
B4E

Total Area: 489 m<sup>2</sup>

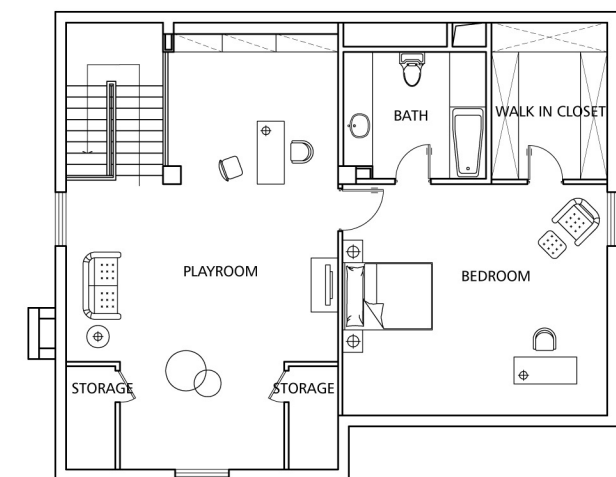


WILLOWBROOK  
AT THE GREENHILLS

Second Level: 121.00 m<sup>2</sup>



Third Level: 77.90 m<sup>2</sup>



\* Disclaimer:  
1) Total Area Size is for reference only  
2) Legal Construction Size for model B4E is 370.73 m<sup>2</sup>  
3) Third Level area calculation does not include floor area under 1.2 m in height  
4) Furniture is included for visual reference only