

Provence (B)

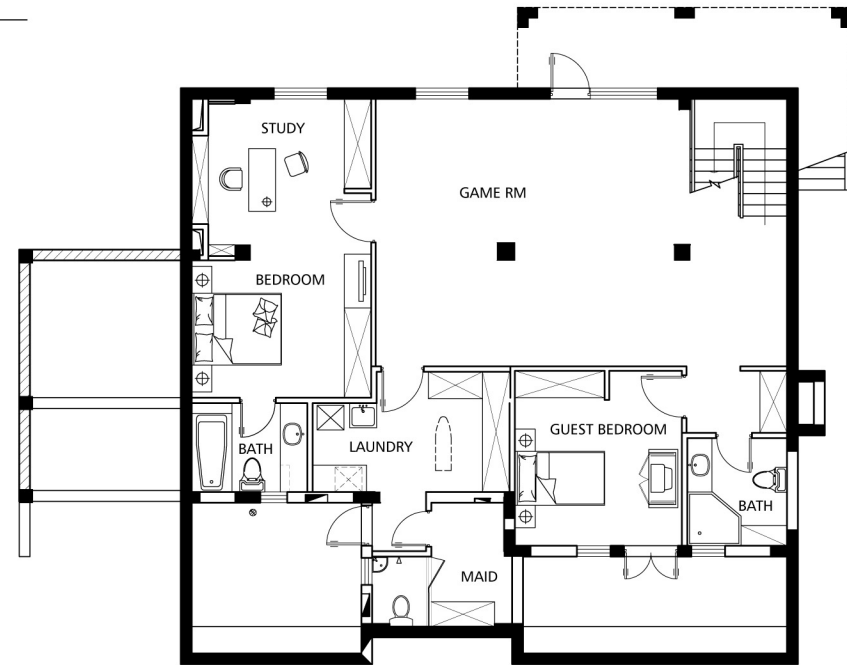
B4P

Total Area: 475 m²

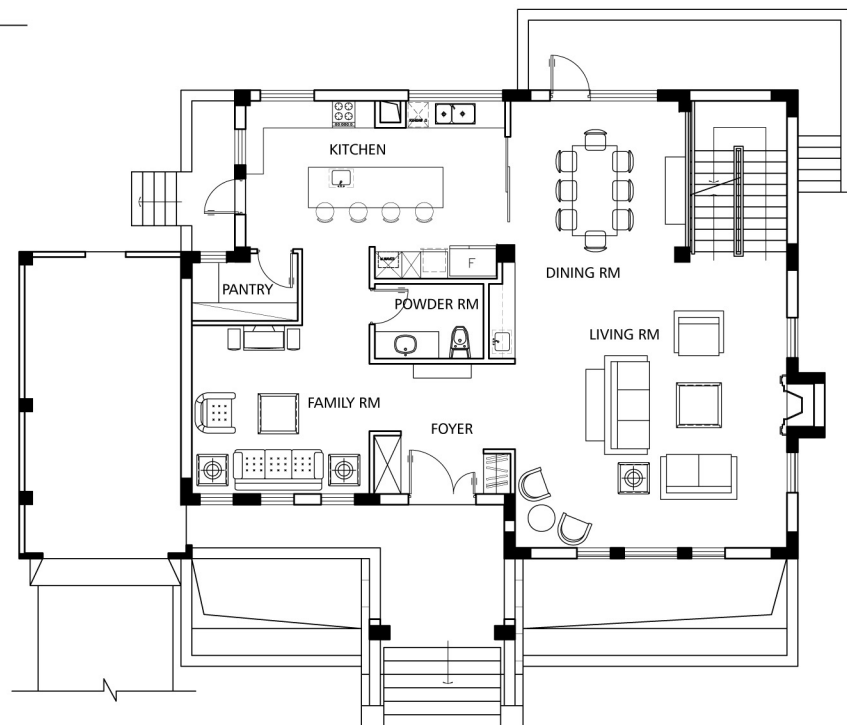


WILLOWBROOK
AT THE GREENHILLS

Ground Level: 159.57 m²



Main Level: 130.15 m²



Provence (B)

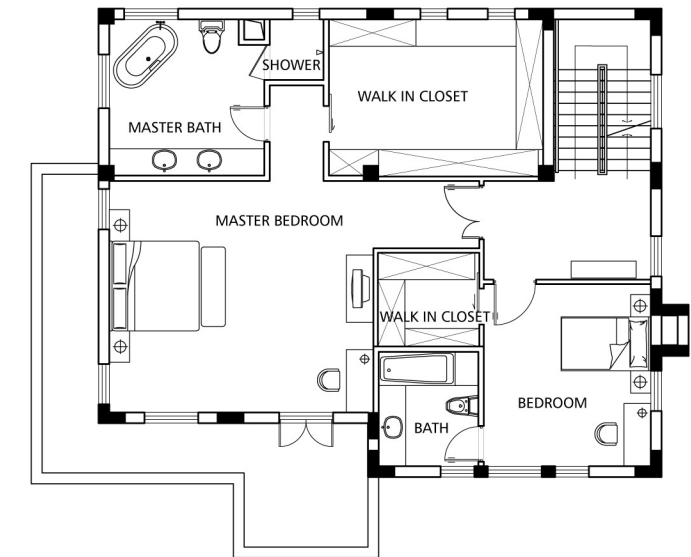
B4P

Total Area: 475 m²

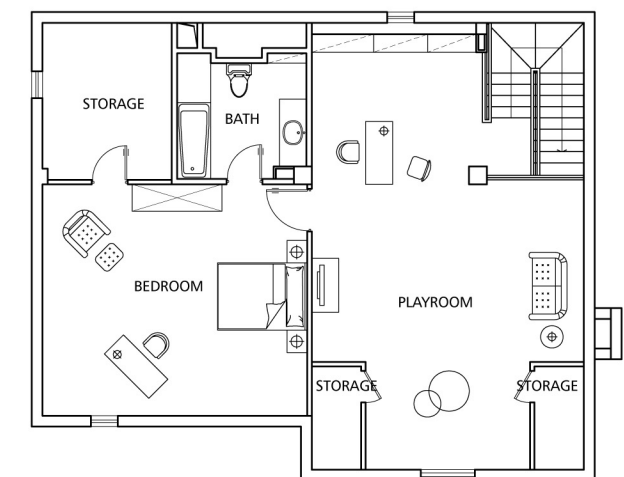


WILLOWBROOK
AT THE GREENHILLS

Second Level: 121.03 m²



Third Level: 64.73 m²



- * Disclaimer:
- 1) Total Area Size is for reference only
 - 2) Legal Construction Size for model B4P is 370.73 m²
 - 3) Third Level area calculation does not include floor area under 1.2 m in height
 - 4) Furniture is included for visual reference only