

Provence (A)

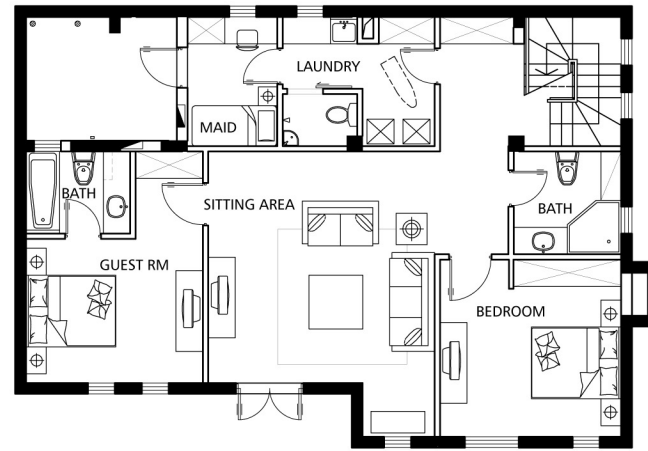
A1P

Total Area: 426 m²

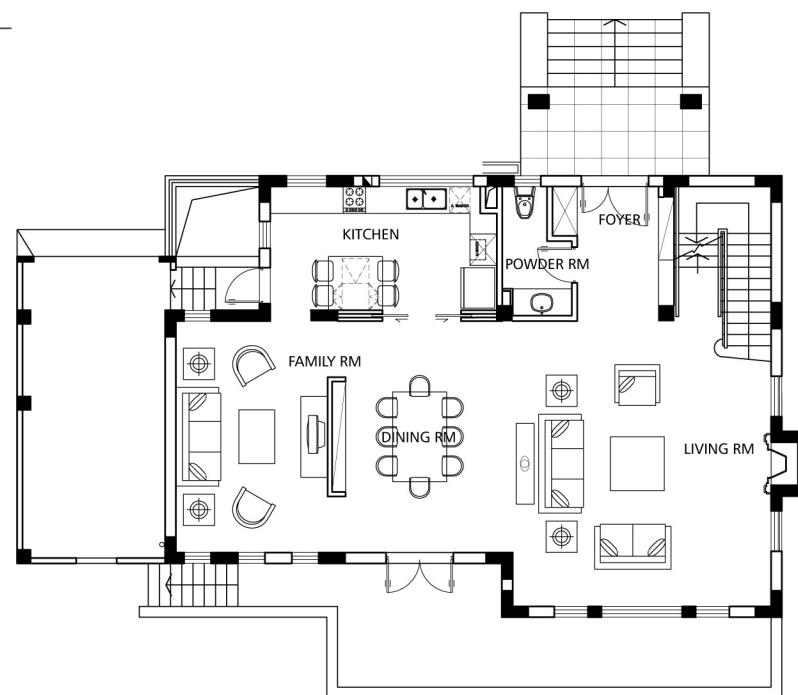


WILLOWBROOK
AT THE GREENHILLS

Ground Level: 139.24 m²



Main Level: 119.69 m²



Provence (A)

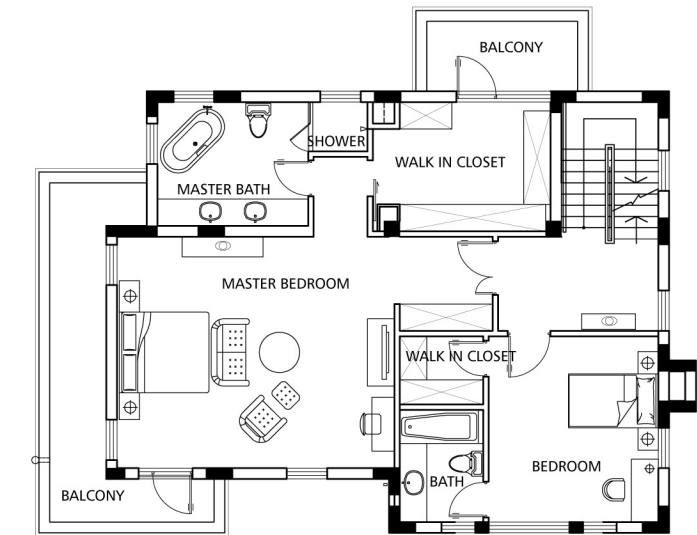
A1P

Total Area: 426 m²

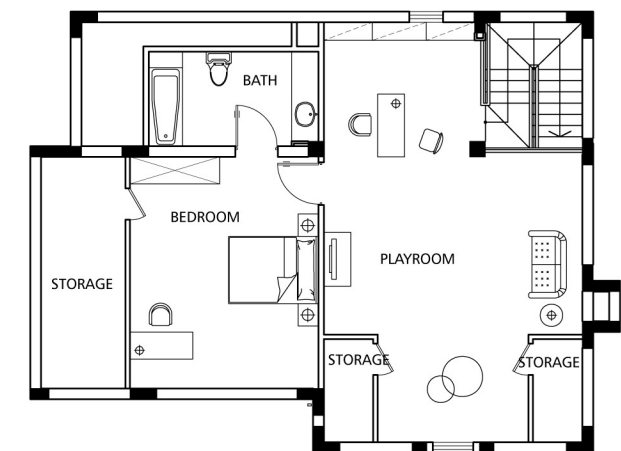


WILLOWBROOK
AT THE GREENHILLS

Second Level: 110.61 m²



Third Level: 56.00 m²



- * Disclaimer:
- 1) Total Area Size is for reference only
 - 2) Legal Construction Size for model A1P is 333.76 m²
 - 3) Third Level area calculation does not include floor area under 1.2 m in height
 - 4) Furniture is included for visual reference only