

Georgian

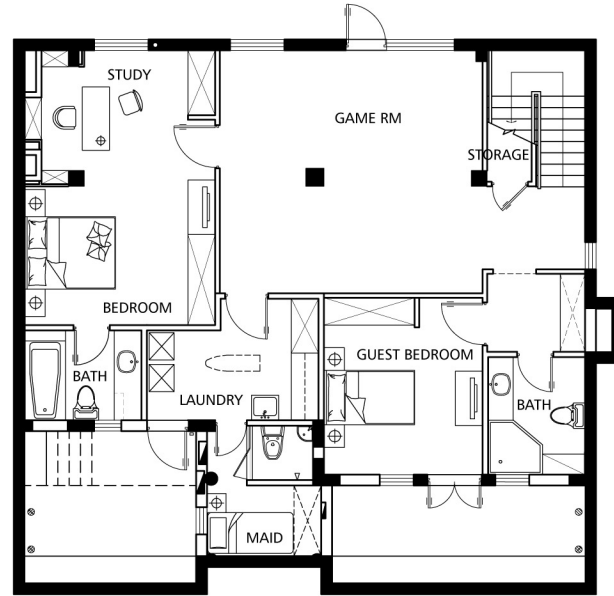
A6B

Total Area: 428 m²

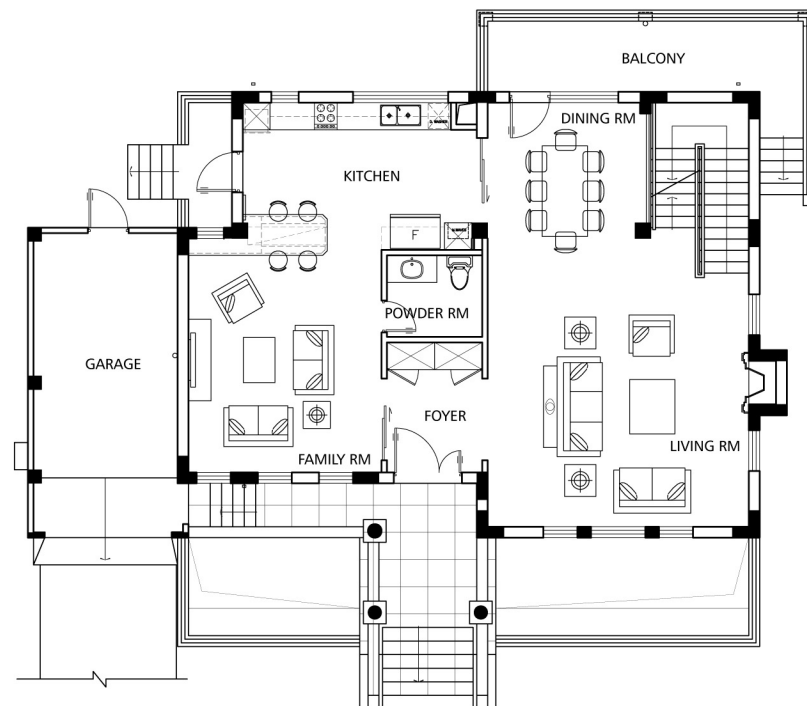


WILLOWBROOK
AT THE GREENHILLS

Ground Level: 141.42 m²



Main Level: 114.79 m²



Georgian

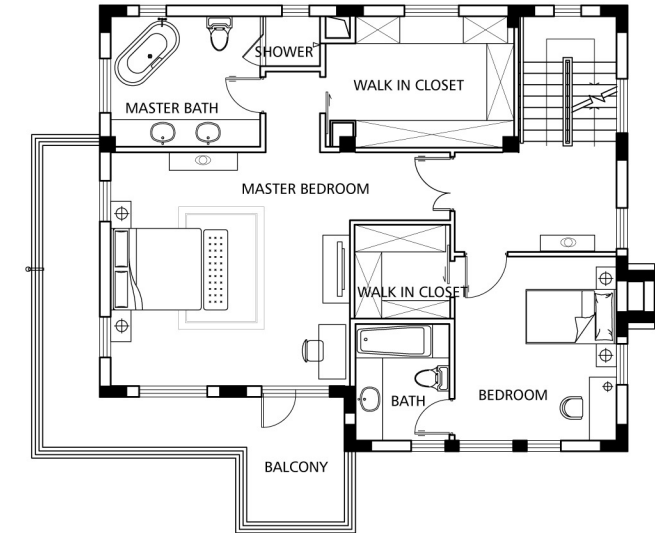
A6B

Total Area: 428 m²

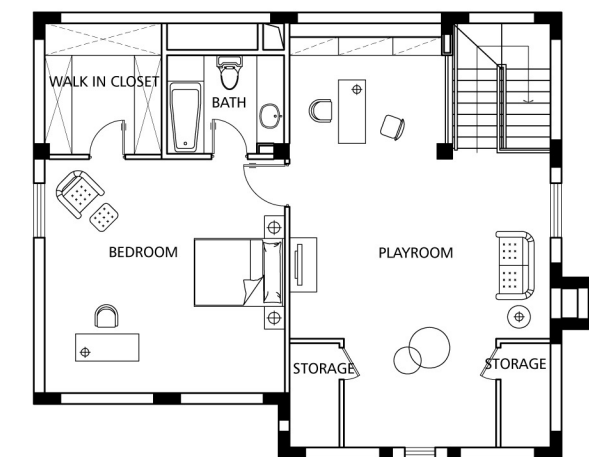


WILLOWBROOK
AT THE GREENHILLS

Second Level: 105.23 m²



Third Level: 66.27 m²



- * Disclaimer:
- 1) Total Area Size is for reference only
 - 2) Legal Construction Size for model A6B is 325.69 m²
 - 3) Third Level area calculation does not include floor area under 1.2 m in height
 - 4) Furniture is included for visual reference only